

Neighbourhood Plan

“Gives communities direct power to develop a shared vision for their neighbourhood and shape the development and growth of their local area.”

Neighbourhood Plan

Communities can have an input onto where they want:

- new homes, shops and offices to be built,
- have their say on what those new buildings should look like and what infrastructure should be provided.

Neighbourhood Plan

Neighbourhood planning provides a powerful set of tools for local people to ensure that they get the right types of development for their community *where the ambition of the neighbourhood is aligned with the strategic needs and priorities of the wider local area.*

Neighbourhood Plan

A neighbourhood plan forms part of the development plan and sits alongside the Local Plan prepared by Uttlesford District Council.

Decisions on planning applications will be made using both the Local Plan and the neighbourhood plan, and any other material considerations.

Key stages in neighbourhood planning:

Step 1: Designating neighbourhood area

Step 2: Preparing a draft neighbourhood plan

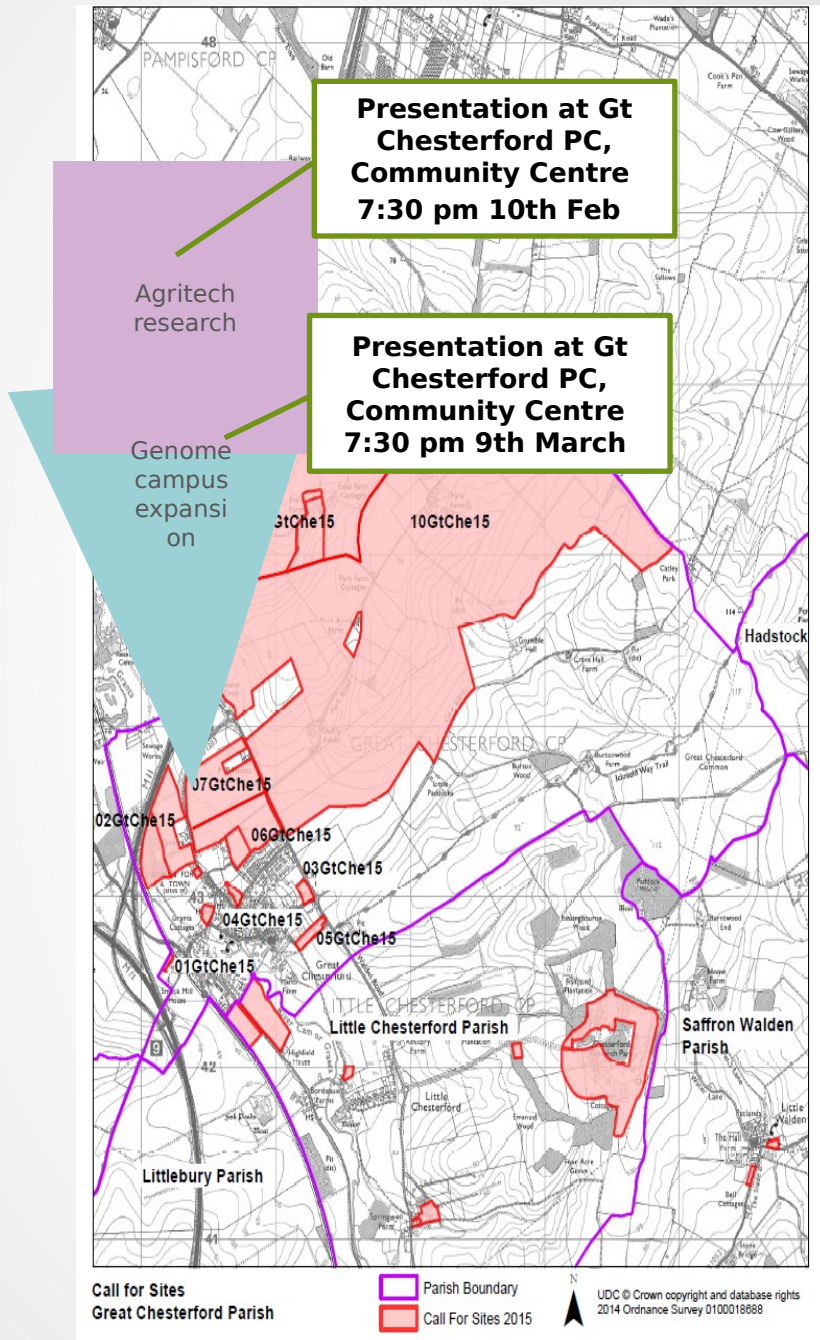
Step 3: Pre-submission publicity & consultation

Step 4: Submission of a neighbourhood plan proposal to UDC

Step 5: Independent Examination

Steps 6 and 7: Referendum and Making the neighbourhood plan (bringing it into force)

Summary of land put forward for **potential** development



Little Chesterford

- In UDC development hierarchy, too small and with insufficient infrastructure to accept major housing development. Nevertheless, larger sites have been submitted in UDC's call for sites albeit on fringes of parish.
- Chesterford Research Park has submitted expansion plan of 68% increase in floor space in the call for sites.
- We are impacted by development in Great Chesterford.

Timescales

- **February 2016** NP Steering Group appoint planning specialist to prepare our plan
- **March 2016** UDC Planning decide on Strategic Approach to new housing development in district :
 - Dispersed or single site
 - Location of development
- **Summer 2016** Neighbourhood Plan Draft complete for consultation
- **Autumn - Winter 2016** Submission of Neighbourhood Plan in advance of UDC District Plan